

## High Input Voltage & Low Power CMOS Voltage Regulators

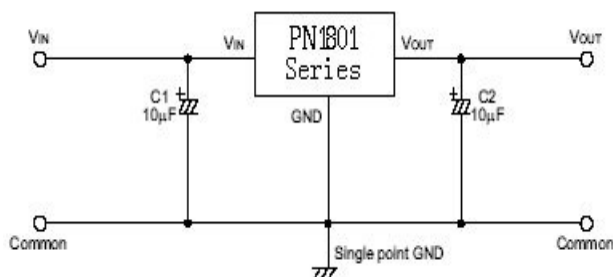
### General Description

The PN1801 series is a set of three-terminal middle current low voltage regulator implemented in CMOS technology. They can deliver 120mA output current and allow an input voltage as high as 18V. They are available with several fixed output voltages ranging from 3.0V to 8.0V. CMOS technology ensures low voltage drop and low quiescent current. Although designed primarily as fixed voltage regulators, these devices can be used with external components to obtain variable voltages and currents.

### Applications

- Battery-powered equipment
- Communication equipment
- Audio/Video equipment

### Typical Application Circuit



### Features

- Low power : 2µA (typ.)
- Low voltage drop: 100mV @ Iout=1mA
- Low temperature coefficient : <math>< \pm 100 \text{ppm}/^\circ\text{C}</math>
- High input voltage : 18V
- Maximum output current : 100mA
- Tiny packages : TO-92, SOT89-3 etc.

### Package

- SOT-89-3L
- TO-92
- SOT23-3L
- SOT23-5L

### Ordering Information

PN1801①②③④

Item	Symbol	Description
①②	30-80	Output voltage: Eg: ②=3, ③=0 represents 3.0V
③		Package type
	T	TO-92
	M	SOT23-3L
	F	SOT23-5L
④	P	SOT-89-3
		Device orientation
	R	Embossed Tape: Standard Feed
	L	Embossed Tape: Reverse Feed