

Ultra-Small Package High-Precision Voltage Detector

General Description

The PN061 series is a series of high-precision voltage detectors developed using CMOS process. The detection voltage is fixed internally with an accuracy of $\pm 2.0\%$. Two output forms, Nch open-drain and CMOS output, are available. Ultra-low current consumption and miniature package lineup can meet demand from the portable device applications.

Applications

- Battery checkers
- Power failure detectors
- Power monitor for portable equipments such as pagers, calculators, electronic notebooks and remote controllers.
- Constant voltage power monitor for cameras, video equipments and communication devices.
- Power monitor for microcomputers and reset for CPUs.

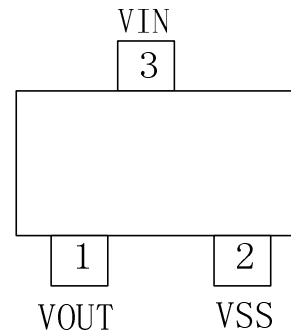
Features

- Ultra-low current consumption $2.4\mu\text{A}$ typ. ($V_{\text{in}}=1.5\text{V}$)
- High-precision detection voltage $\pm 2.0\%$
- Operating voltage range 0.7V to 8V
- Detection voltage 1.5V to 6.0V (0.1V step)

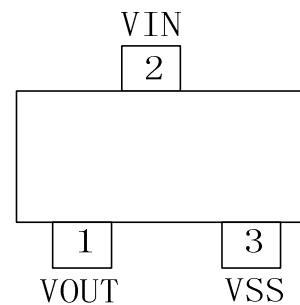
- Output form Nch open-drain output (Active Low) or CMOS output (Active Low)
- Small package: SOT-23-3L, SOT23

Package

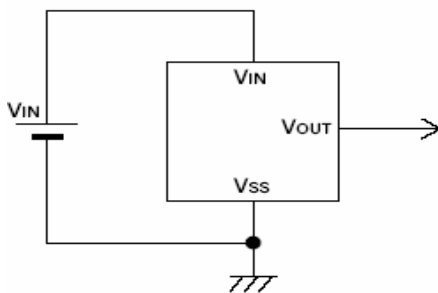
SOT-23-3L



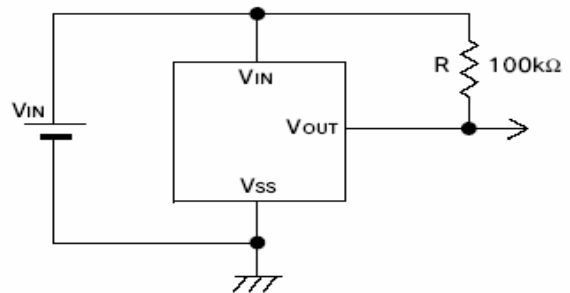
SOT23



Typical Application Circuit



CMOS Output



Nch Open-drain Output